



ITAB

PRODUCT
CATALOG

ITAB Finland

Table of contents

Retail Shelving Systems

Basic system, high foot H19.....	5
Basic system, low foot H13.....	7
Backpanels.....	11
End frame.....	13
Basic system, internal corner 45°.....	15
Steel shelf external corner.....	18
Light wall around column.....	19
Light Wall profile.....	20
Heavy.....	21
Gondola.....	24

ACCESSORIES

Steel shelf.....	29
Wire shelf.....	30
Brackets.....	31
Divers.....	32
Wood shelf.....	34
Wooden shelf for bracket list.....	35
Glass shelf.....	36
Glass shelf with frame.....	37
Other shelves.....	38
Wire basket.....	40
Data strips.....	41
Data strip bracket.....	42
Info profile.....	44
Product info.....	45
Cross bar.....	46
Flat cross bar.....	48
Cross bar for heavy loads.....	49
Adjustable rack.....	50
Panel accessories.....	52
Perforated backpanel accessories.....	54
Accessories for uprights holes.....	56
Colours and materials.....	57

ITAB Finland

At ITAB we help customers turn consumer brand experience into physical reality with our know-how, solutions and ecosystem of partners. Co-creating together with consumers and retailers we deliver the physical realisation of engaging, convenient and seamless environments. Delivering measurable results for customers in instore experience, sales, efficiency, service and running costs.

In this catalogue you will find **standard products from our basic retail shelving systems**. If you want to take the customer experience of your store or brand to the next level and need a customised implementation, contact ITAB Finland Customer Service or your sales and together we will create an unforgettable experience for your customer.



ITAB Finland oy

Puh: 0207 121 611

asiakaspalvelu@itab.com

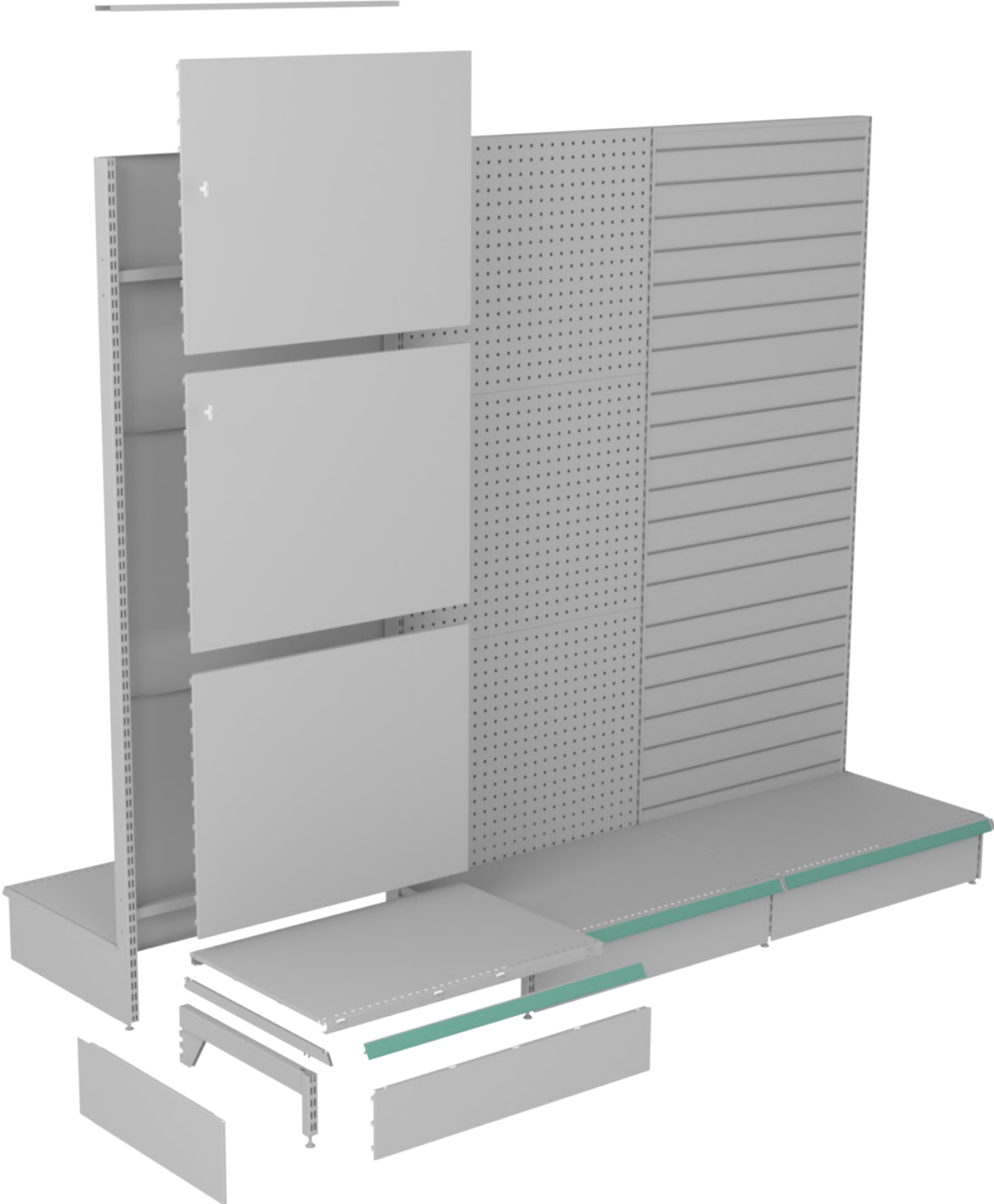
www.itab.fi

Our references:



Retail Shelving Systems

Basic system, high foot H19



Basic system, high foot H19

L=Length/cm

D=Depth/cm

H=Height/cm

Ø mm



**Upright + adjustable cap
60x30x2,5 mm**

501017	H139
501019	H162
501021	H187
501045	H200
501023	H210
501025	H232
501031	H302

**Upright + adjustable cap
80x30x2,5 mm**

1016429	H139
1006440	H162
550218	H187
501316	H200
550220	H210
550222	H232
1006354	H302



Tie-bar + screws

1015068	L60
1014910	L90
1015069	L120



High foot for 2,5 mm upright

502000	H19	D40
502001	H19	D50
502002	H19	D60
502003	H19	D80



Extension part + adjustable cap

1018249	H19	D10
1022847	H19	D20
2008600	H19	D30



Bracket for base self

502004	H3	D40
502005	H3	D50
502006	H3	D60
502007	H3	D80



Bracket for base self, no nose

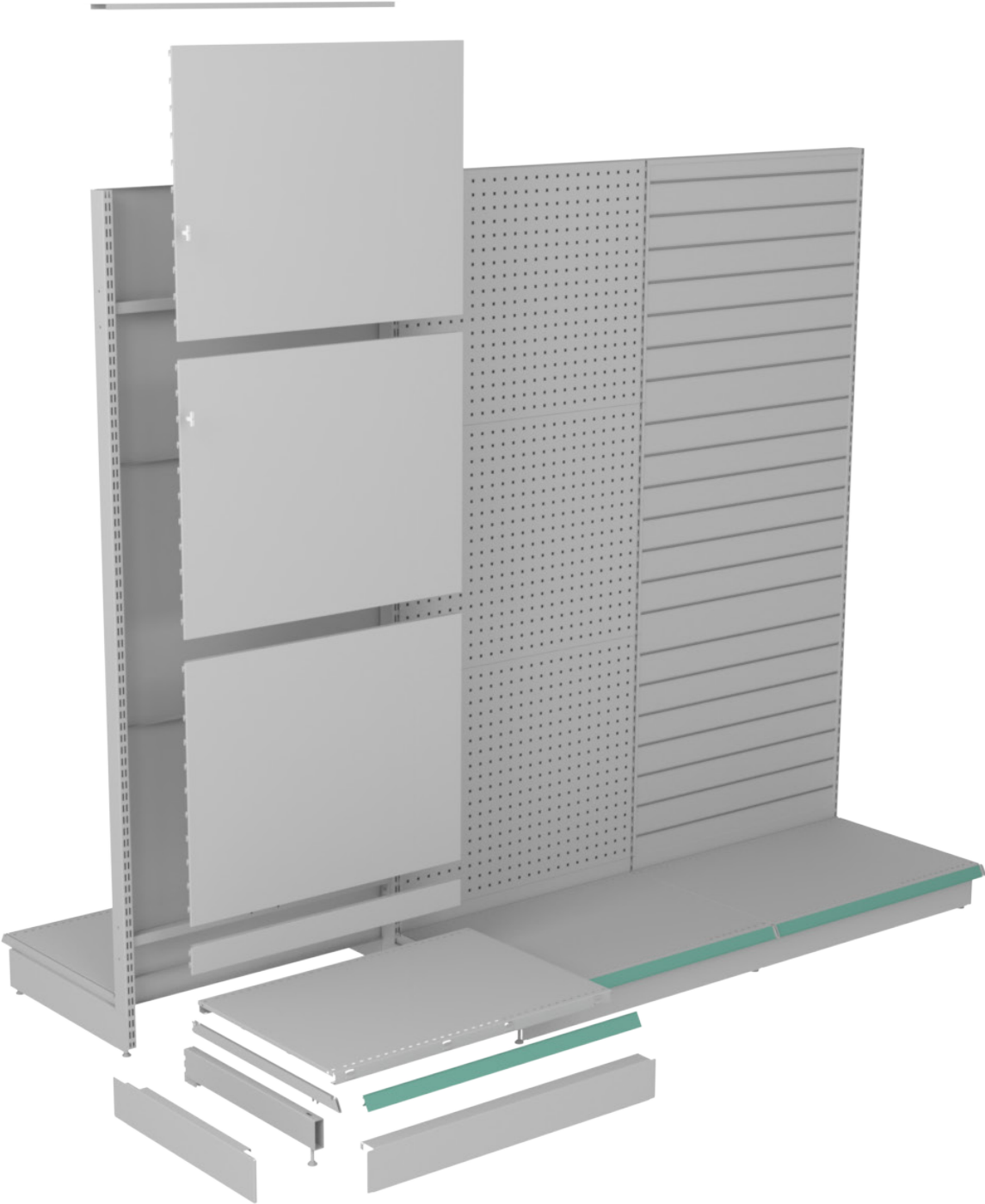
502022	H3	D40
502023	H3	D50
502024	H3	D60
502025	H3	D80



End plinth

502085	H21	D40
502086	H21	D50
502087	H21	D60
502088	H21	D80

Basic system, low foot H13



Basic system, low foot H13

L=Length/cm

D=Depth/cm

H=Height/cm

Ø mm



Upright 60x30x2,5 mm for low foot + adjustable cap

521251	H139
521252	H162
521253	H187
521254	H200
521255	H210
521256	H232
521259	H302

Upright 80x30x2,5 mm for low foot + adjustable cap

1018833	H139
1017105	H162
521260	H187
521261	H200
521262	H210
521263	H232
1100163	H302



Tie-bar + screws

1015068	L60
1014910	L90
1015069	L120



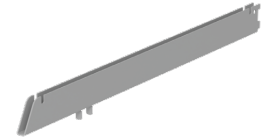
Low foot for 2,5 mm upright

521240	H13	D40
521241	H13	D50
521242	H13	D60



Extension part for low leg + adjustable cap

1019825	H13	D10
1006103	H13	D20
1107509	H13	D30



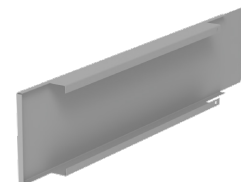
Bracket for base self

502004	H3	D40
502005	H3	D50
502006	H3	D60
502007	H3	D80



Bracket for base self, no nose

502022	H3	D40
502023	H3	D50
502024	H3	D60
502025	H3	D80



End plinth for low foot

521248	H10	D40
521249	H10	D50
521250	H10	D60

L=Length/cm

D=Depth/cm

H=Height/cm

Ø mm



Plinth for low foot

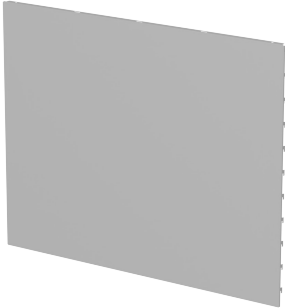
521245	L60	H10
521246	L90	H10
521247	L120	H10

L=Length/cm

D=Depth/cm

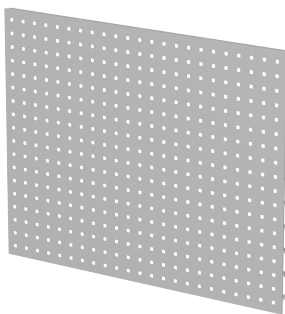
H=Height/cm

Ø mm



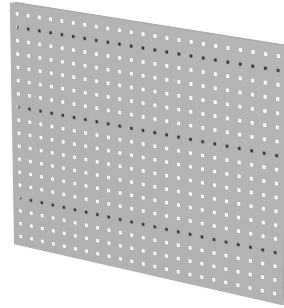
Steel backpanel

501063	L60	H38
501104	L60	H48
501105	L60	H70
501073	L90	H38
501106	L90	H48
501107	L90	H70
501093	L120	H38
501108	L120	H48
501109	L120	H70



Perforated backpanel

501111	L60	H38
501112	L60	H48
501113	L60	H70
501700	L90	H38
501114	L90	H48
501115	L90	H70
501701	L120	H38
501116	L120	H48
501117	L120	H70



Perforated backpanel, strengthened

1024520	L90	H38
1024638	L90	H48
1024458	L90	H70



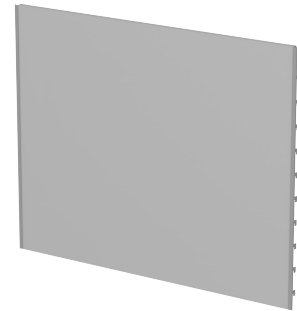
Plinth H8

520196	L60	H8
520197	L90	H8
520198	L120	H8



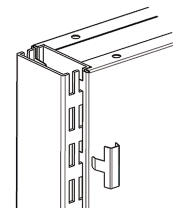
Plinth H18

501100	L60	H18
501101	L90	H18
501102	L120	H18



Wooden backpanel with hook list

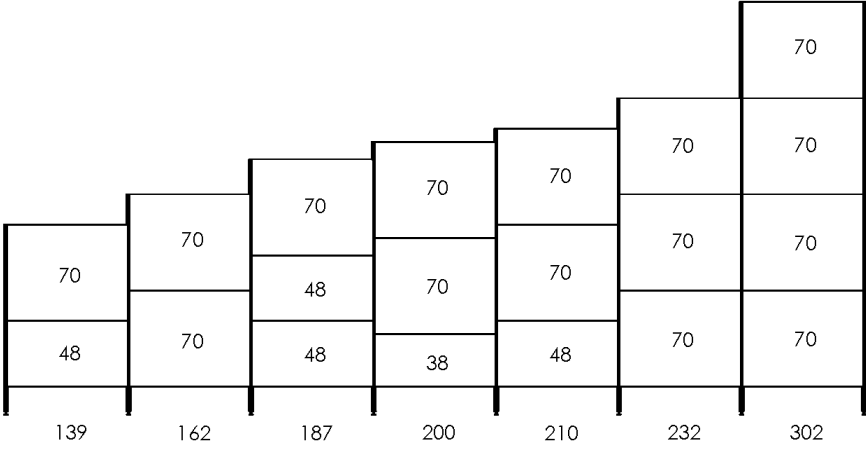
510100	L60	H70
510103	L60	H96
510106	L60	H118
510109	L60	H141
510101	L90	H70
510104	L90	H96
510107	L90	H118
510110	L90	H141
510102	L120	H70
510105	L120	H96
510108	L120	H118
510111	L120	H141



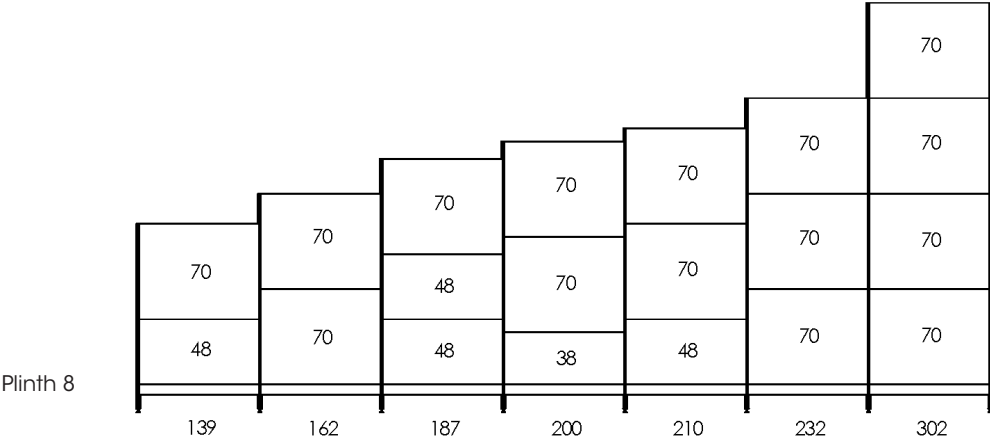
Locking clip, zink-coated

501120	H3
--------	----

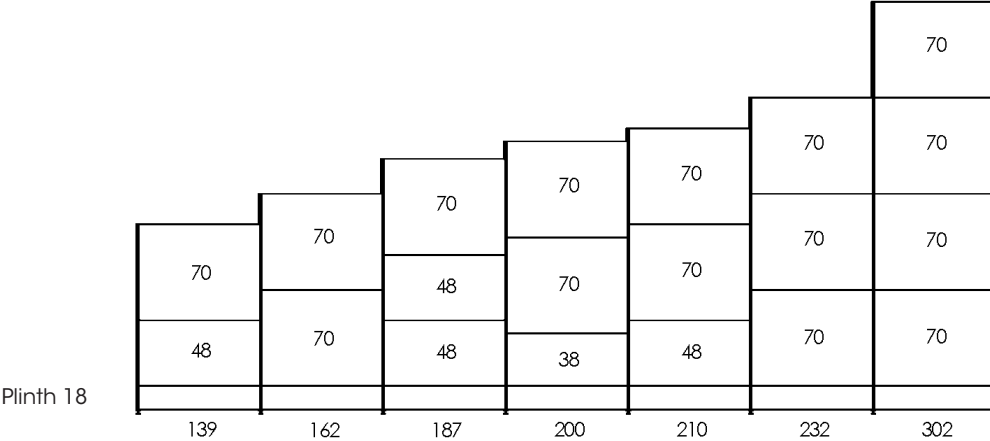
Backpanels



Basic system, high foot H19



Basic system, low foot H13



Basic system, without foot

L=Length/cm

D=Depth/cm

H=Height/cm

Ø mm

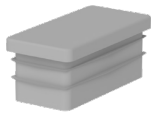


Top trim 30x60

520389	L60	D7,5
520390	L90	D7,5
520391	L120	D7,5

Top trim 30x80

1011077	L60	D9,5
1006441	L90	D9,5
1011074	L120	D9,5



Upright cap

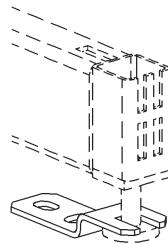
800476	L3	D6	White
905946	L3	D6	Grey
905942	L3	D6	Black
800382	L3	D8	White
905947	L3	D8	Grey
906832	L3	D8	Black



Locking clip, stainless steel

557618

For panels with max thickness 6mm



Floor fixing, zinc-coated

501507



Adjustable wall support, incl. screws

521295 D37...70



Wall support + screws

572298 D0...15
521292 D15...55



Extension for upright 60x30x2,5 mm

1007213	H19
1005990	H38
1005358	H48
1009636	H58
1007954	H70

Extension for upright 80x30x2,5 mm

1005500	H19
1005357	H38
1007363	H48
1104750	H58
1003766	H70

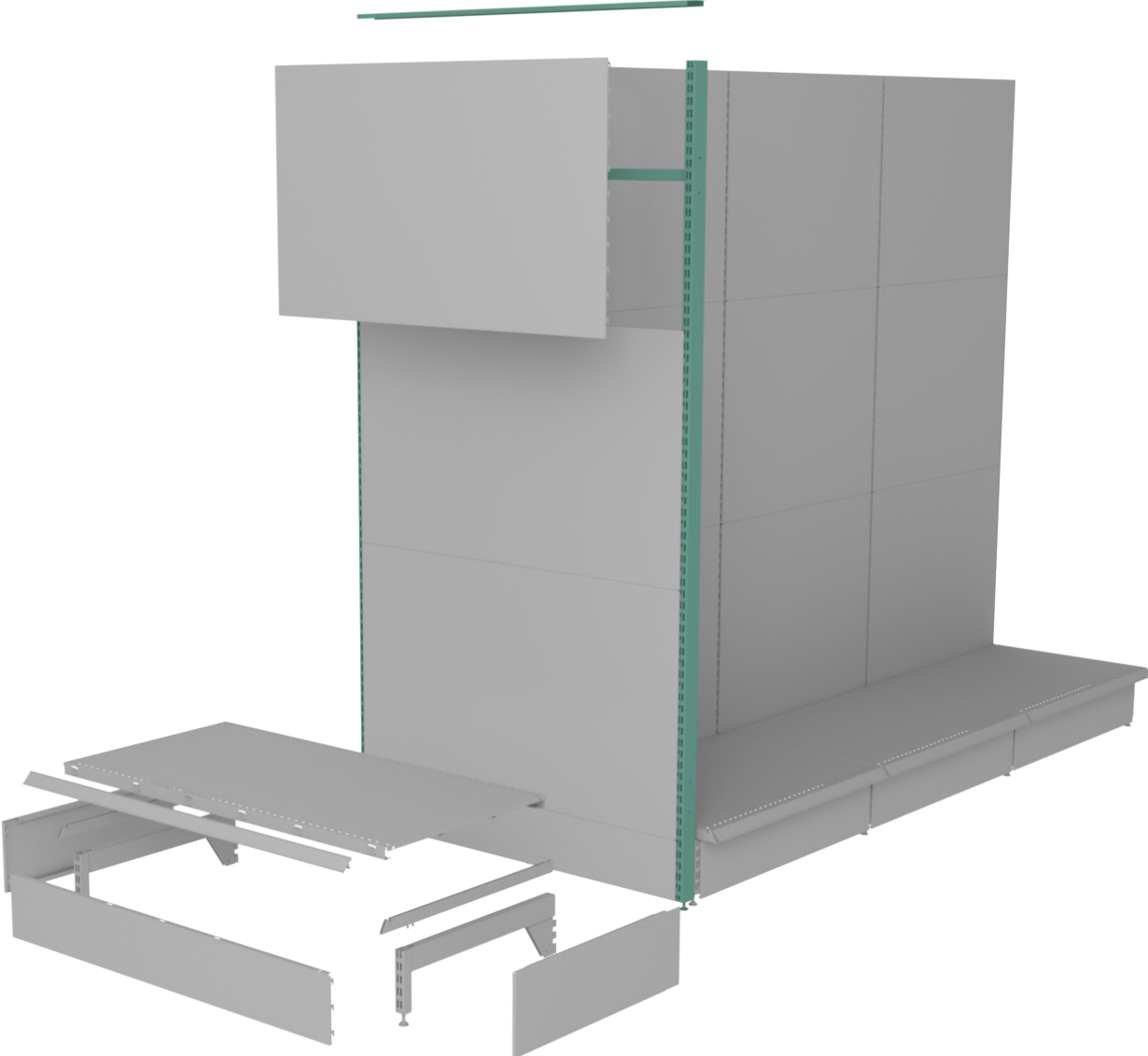


Support for bottom shelf for heavy loads

550320 L90

Needed 2 pcs / support

End frame



End frame

L=Length/cm

D=Depth/cm

H=Height/cm

Ø mm



**Upright 60x30x2,5 mm
+ adjustable cap**

501017	H139
501019	H162
501021	H187
501045	H200
501023	H210
501025	H232
501031	H302

**Upright 80x30x2,5 mm
+ adjustable cap**

1016429	H139
1006440	H162
550218	H187
501316	H200
550220	H210
550222	H232
1006354	H302



Tie bar for end frame, incl. screws

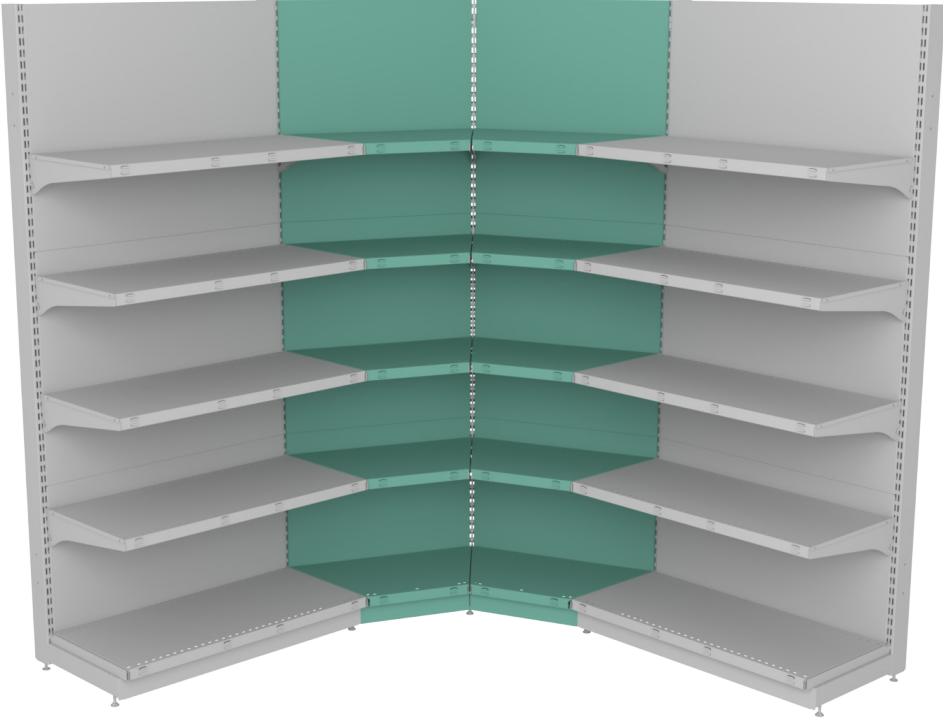
1015066	L60
1014909	L90
1015067	L120



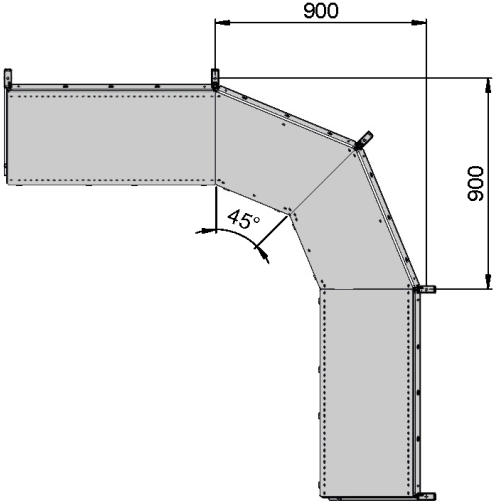
Top trim 30x60

520389	L60	D7,5
520390	L90	D7,5
520391	L120	D7,5

Basic system, internal corner 45°



Internal corner 45° measurements



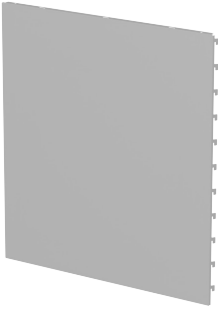
Basic system, internal corner 45°

L=Length/cm

D=Depth/cm

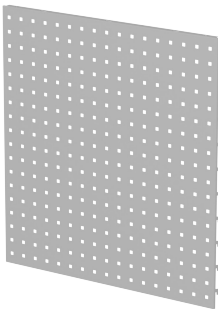
H=Height/cm

Ø mm



Steel backpanel internal corner 45°

501279	L65	H38
501121	L65	H48
501122	L65	H70



Perforated backpanel internal corner 45°

501287	L65	H38
501123	L65	H48
501124	L65	H70



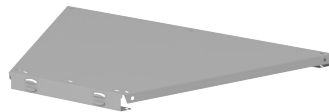
Plinth, internal corner 45°

501515	L65	H18
--------	-----	-----



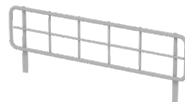
Plinth internal corner 45°

502016	H18	D40
502017	H18	D50
502018	H18	D60



Steel shelf internal corner 45°

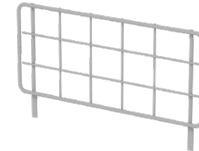
501174	D30	H3
501175	D40	H3
501176	D50	H3
501177	D60	H3



Wire riser, low, internal corner 45°, zinc

501237	L42	D30	H8
501236	L34	D40	H8
501235	L26	D50	H8
501234	L19	D60	H8

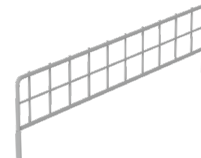
D=depth of the internal corner



Wire riser, high, internal corner 45°, zinc

501243	L26	D50	H15
501242	L19	D60	H15

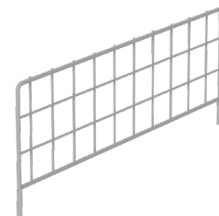
D=depth of the internal corner



Wire divider, low, internal corner 45°, zinc

501269	D40	H8	D1 34
501271	D60	H8	D1 51

D=depth of the internal corner



Wire divider, high internal corner 45°, zinc

501275	D60	H15	D1 51
--------	-----	-----	-------

D=depth of the internal corner

L=Length/cm

D=Depth/cm

H=Height/cm

Ø mm



Front glass + holders, internal corner 45° for steel shelf

501216	L37	D30	H10
501215	L29	D40	H10
501214	L21	D50	H10
501213	L14	D60	H10

D=depth of the internal corner



Corner holder for glass divider, steel shelf

501415	H5
501209	H8
501208	H10



Corner holder for glass divider, steel self

501248	H5
501249	H8
501207	H10



Data strip for an internal corner shelf 45°

White

501200	L34	D40	H4	39
501201	L26	D50	H4	39
501202	L19	D60	H4	39

Grey RAL 9007

1023528	L26	D50	H4	39
1022647	L19	D60	H4	39

White

1103942	L34	D40	H5	52
1103877	L26	D50	H5	52

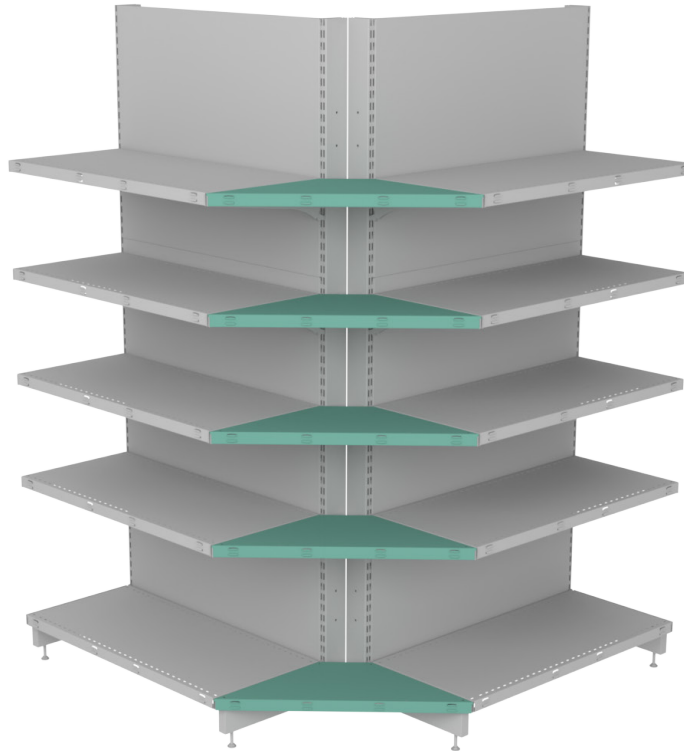
Grey RAL 9007

1006641	L42	D30	H5	52
1006640	L34	D40	H5	52
1006639	L26	D50	H5	52
1105977	L19	D60	H5	52

Black

1108084	L34	D40	H5	52
1107002	L26	D50	H5	52
1107577	L19	D60	H5	52

Basic system, external corner



L=Length/cm

D=Depth/cm

H=Height/cm

Ø mm



Steel shelf external corner for upright 30x30

2006293 D20 H3



Steel shelf external corner for upright 30x60

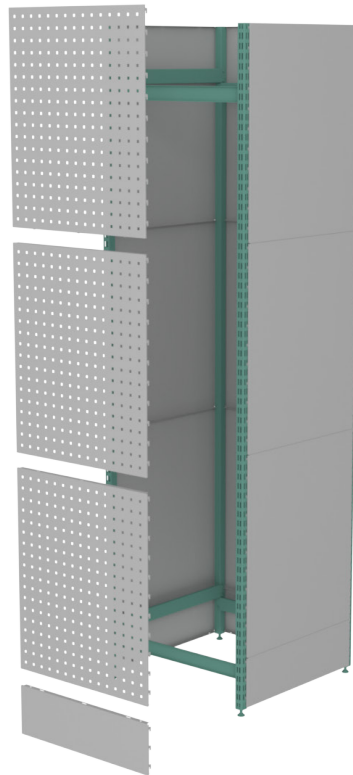
2006834 D20 H3
 1100338 D30 H3
 1023544 D40 H3
 1025241 D50 H3
 2024596 D60 H3



Steel shelf external corner for upright 30x80

2009762 D30 H3
 2009763 D40 H3
 2009764 D50 H3
 2009765 D60 H3

Light wall around column



L=Length/cm

D=Depth/cm

H=Height/cm

Ø mm



**Corner upright 30x30x2 mm
+ adjustable cap**

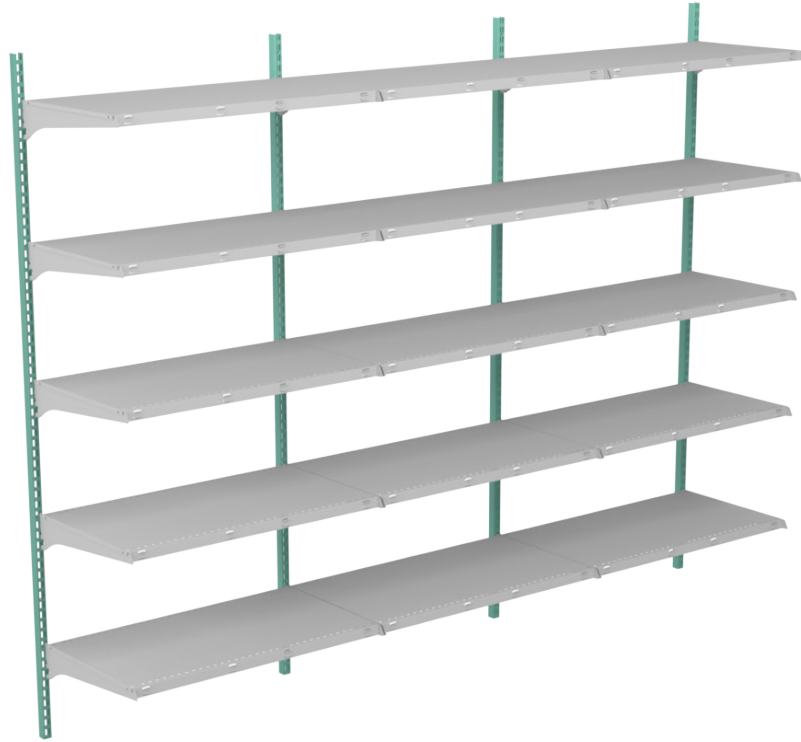
1007898	H210
501917	H232
501920	H302



**Tie bar for corner upright + drill
screws**

501925	L60
501926	L90

Light Wall profile



NOTE! For light loads the fixing must take into consideration the wall material

L=Length/cm

D=Depth/cm

H=Height/cm

Ø mm



Light Wall profile, screw fitting

- 521300 H141
- 521301 H211
- 521302 H259

Attached directly to the wall.

Heavy



Heavy

L=Length/cm

D=Depth/cm

H=Height/cm

Ø mm



**Upright Heavy 30x30
+ adjustable cap**

1011501	H139
1011500	H162
1011499	H187
1011498	H200
1011497	H210
1011496	H232
1011493	H302



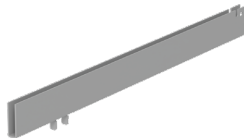
Foot Heavy

1011482	H16	D50
1011481	H16	D60
1011480	H19	D80



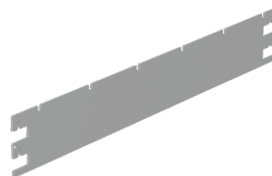
Bracket for base self

502004	H3	D40
502005	H3	D50
502006	H3	D60
502007	H3	D80



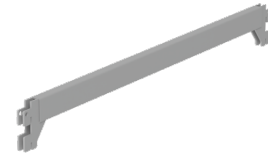
Bracket for base self, no nose

502022	H3	D40
502023	H3	D50
502024	H3	D60
502025	H3	D80



Bracket

1011504	D50
1011503	D60
1011502	D80



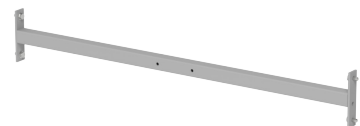
Support for horizontal

2004007	D50
2004008	D60
2004009	D80



Top support

2003994	L60
2003993	L90
2003992	L120
2004094	L180



Tie-bar + screws

1015068	L60
1014910	L90
1015069	L120

Heavy



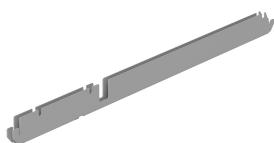
Upright Heavy 30x30 can also be used for the basic system with the high and low legs. In this case, the bottom support is used instead of the bottom bracket.

L=Length/cm

D=Depth/cm

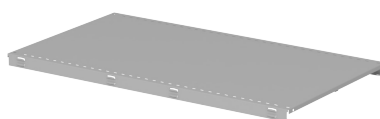
H=Height/cm

Ø mm



Foot support

1016093	D40
1014572	D50
1014571	D60
1014570	D80



Steel shelf, reversible

501152	L60	D40	H3
501153	L60	D50	H3
501154	L60	D60	H3
501158	L90	D40	H3
501159	L90	D50	H3
501160	L90	D60	H3
501164	L120	D40	H3
501165	L120	D50	H3
501166	L120	D60	H3

Gondola



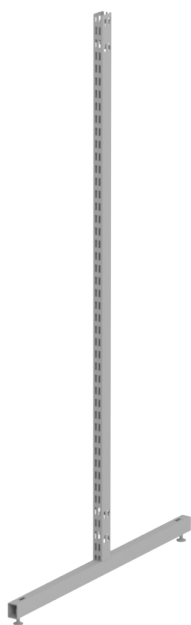
Gondola

L=Length/cm

D=Depth/cm

H=Height/cm

Ø mm



T frame for gondola

520412 L80 H146



L frame for Gondola

2000723 L40 H146



Tie bar

520409 L60
520410 L90
520411 L120



Bracket for base self

502004 D40



Bracket for base self, no nose

502022 D40



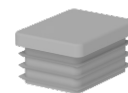
Castor wheel

1005412 Ø 75 H100 mm



Castor wheel with brake

1005413 Ø 75 H100 mm



Upright cap

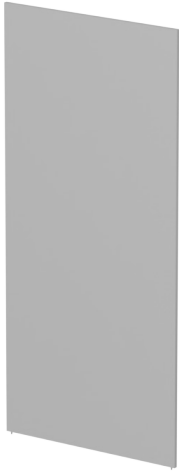
800381 L3 D4 White
905830 L3 D4 Grey
1003978 L3 D4 Black

L=Length/cm

D=Depth/cm

H=Height/cm

Ø mm



Middle backpanel, Gondola

1005546	L60	H125
1005548	L90	H125
1005549	L120	H125



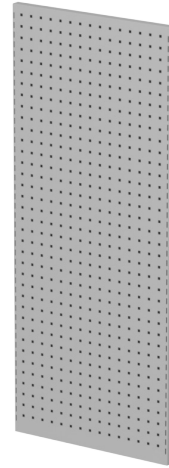
Top trim for steel backpanels

1005538	L60
1005543	L90
1005545	L120



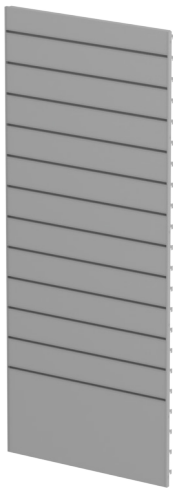
Top trim for wooden backpanels

520389	L60
520390	L90
520391	L120



Perforated end, gondola

1005558	L60	H146
---------	-----	------



Wooden panel for Gondola

1005536	L60
1005541	L90
1005542	L120



End panel, Gondola

1005551	L30	H146
---------	-----	------



Smooth end, steel

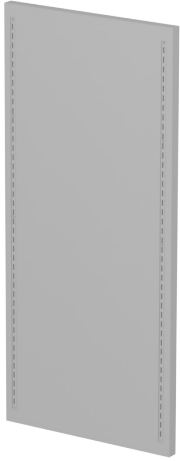
1005560	L30	H146
---------	-----	------

L=Length/cm

D=Depth/cm

H=Height/cm

Ø mm



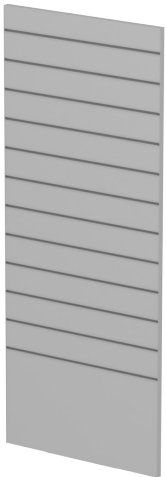
Wooden end with wall profile

1005529 L66 H146



Mirror end

1003145 L44 H140

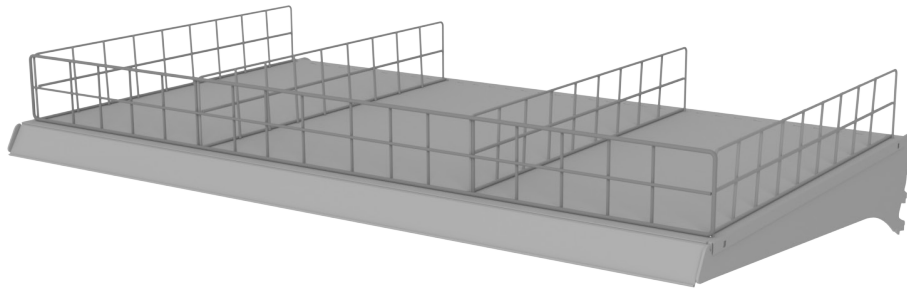


Panel end

1005530 L60 H146

Accessories

Steel shelf

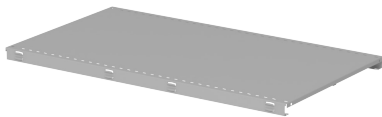


L=Length/cm

D=Depth/cm

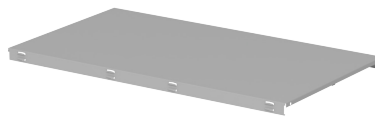
H=Height/cm

Ø mm



Steel shelf, reversible

501150	L60	D20	H3
501151	L60	D30	H3
501152	L60	D40	H3
501153	L60	D50	H3
501154	L60	D60	H3
501156	L90	D20	H3
501157	L90	D30	H3
501158	L90	D40	H3
501159	L90	D50	H3
501160	L90	D60	H3
501162	L120	D20	H3
501163	L120	D30	H3
501164	L120	D40	H3
501165	L120	D50	H3
501166	L120	D60	H3



Steel shelf, reversible, without perforation

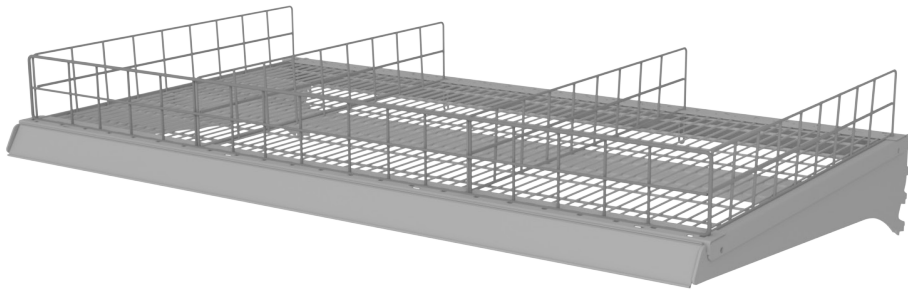
521152	L60	D40	H3
521153	L90	D40	H3



Steel shelf, oval perforated

1017094	L60	D40
1017093	L60	D50
1017092	L60	D60
1017091	L90	D40
1017090	L90	D50
1017089	L90	D60
1019646	L120	D40
1017762	L120	D50
1104871	L120	D60

Wire shelf



L=Length/cm

D=Depth/cm

H=Height/cm

Ø mm



Wire shelf, reversable, zinc

1107814	L60	D40
1107815	L60	D50
1107816	L60	D60
1107817	L90	D40
1107818	L90	D50
1107819	L90	D60
1107820	L120	D40
1107821	L120	D50
1107822	L120	D50

Brackets

L=Length/cm

D=Depth/cm

H=Height/cm

Ø mm



Bracket with 4 positions

501143	D40
501144	D50
501145	D60

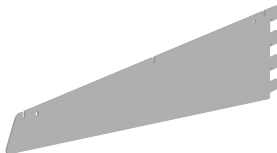
Angles
+1°, -13°, -20°, -30°



Bracket with 4 positions, no nose

501482	D40
501483	D50
501484	D60

Angles
+1°, -13°, -20°, -30°



Bracket, strenghtened, with 1 position

501147	D50
501148	D60
501149	D80

No angle adjustment



Bracket with 2 positions

1004452	D20
1004442	D30
1004443	D40

Angles
+1°, -13°



Bracket with 2 positions, no nose

1004451	D20
1004441	D30
521154	D40

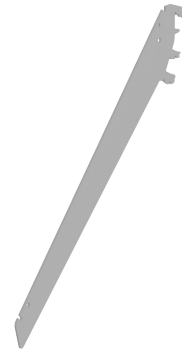
Angles
+1°, -13°



Steel shelf holder

1103273	D1.5
---------	------

2 pcs per shelf when used with a down slant steel shelf



Bracket, down slant 45°

501536	D30
520015	D50
520083	D60



Curved bracket for a steel shelf

520016	D20	H23
520017	D30	H23
520018	D40	H23
520019	D50	H23
520020	D60	H23

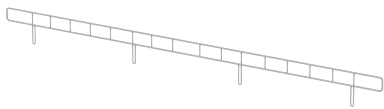
Dividers

L=Length/cm

D=Depth/cm

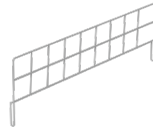
H=Height/cm

Ø mm



Wire divider low, zinc

520113	L60	H3
520114	L90	H3
520115	L120	H3



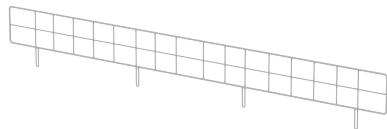
Wire divider, zinc

501254	D20	H8
501255	D30	H8
501256	D40	H8
501257	D50	H8
501258	D60	H8



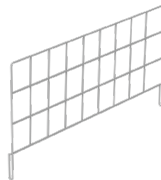
Front glass + corner holder for steel shelf

501424	L60	H5
501409	L60	H10
501434	L90	H5
501410	L90	H10
501435	L120	H5
501211	L120	H10



Wire divider, zinc

501230	L60	H8
501231	L90	H8
501232	L120	H8



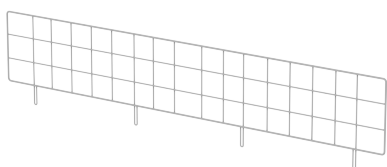
Wire divider high, zinc

520082	D30	H15
501261	D40	H15
501262	D50	H15
501263	D60	H15



Glass Divider + holders For steel shelf

501427	D20	H5	D1
501225	D20	H10	D1
501418	D30	H5	D1
501226	D30	H10	D1
501420	D40	H5	D1
501227	D40	H10	D1
501422	D50	H5	D1
501228	D50	H10	D1
501423	D60	H5	D1
501229	D60	H10	D1



Wire divider high, zinc

501250	L60	H15
501251	L90	H15
501252	L120	H15

L=Length/cm

D=Depth/cm

H=Height/cm

Ø mm



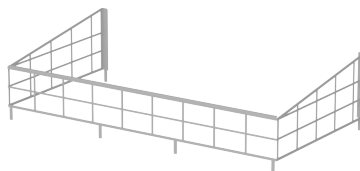
Corner holder for a glass divider on a steel shelf, plastic

501415	H5
501209	H8
501208	H10



Holder for a glass divider on a steel shelf, plastic

501248	H5
501249	H8
501207	H10



Metal frame for shelf

1108370	L60	D40	H19
1104929	L90	D40	H19
1025153	L90	D50	H19
1107701	L90	D60	H19
1105618	L120	D30	H19
1105619	L120	D40	H19
1025295	L120	D50	H19

Wood shelf

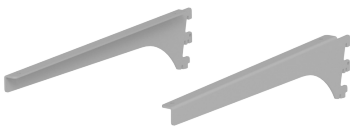


L=Length/cm

D=Depth/cm

H=Height/cm

Ø mm



Bracket pair for a wood shelf, with 2 positions (incl. screws)

521008	D20
521009	D30
521010	D40



Wooden shelf for brackets, white

1110486	L60	D20
1110487	L60	D30
1110488	L60	D40
1110489	L90	D20
1110490	L90	D30
1110491	L90	D40



Wooden shelf for brackets, black

1110495	L60	D20
1110496	L60	D30
1110497	L60	D40
1110492	L90	D20
1110493	L90	D30
1110494	L90	D40

Wooden shelf for bracket list



L=Length/cm

D=Depth/cm

H=Height/cm

Ø mm



Bracket list for wooden shelf + screws

550272	D30
550273	D40
550274	D50
550271	D60



Wooden shelf for bracket list white

1014390	L60	D30
1025215	L60	D40
1110478	L60	D50
1110479	L60	D60
1110477	L90	D30
1006921	L90	D40
1009133	L90	D50
1006920	L90	D60



Wooden shelf for bracket list white

1110482	L60	D30
1110483	L60	D40
1110484	L60	D50
1110485	L60	D60
1110480	L90	D30
1110481	L90	D40
1108420	L90	D50
1107580	L90	D60

Glass shelf



L=Length/cm

D=Depth/cm

H=Height/cm

Ø mm



Bracket pair for a glass shelf, with 2 positions (incl. suction cups),

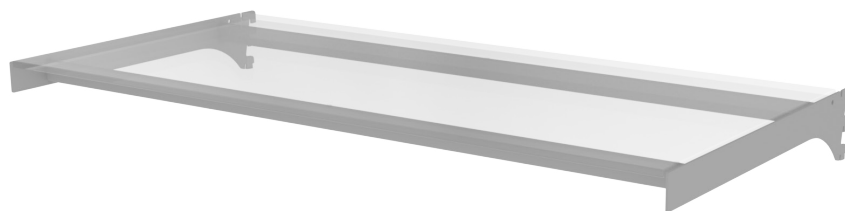
521008-L	D20
521009-L	D30
521010-L	D40



Glass shelf, clear glass 8 mm, unhardened

521091	L60	D20
521092	L60	D30
521093	L60	D40
521094	L90	D20
521095	L90	D30
521096	L90	D40
521097	L120	D20
521098	L120	D30
521099	L120	D40

Glass shelf with frame



L=Length/cm

D=Depth/cm

H=Height/cm

Ø mm



Glass shelf frame

550072	L60	D30
550073	L60	D40
550154	L90	D30
550155	L90	D40
550152	L120	D30
550153	L120	D40



Glass shelf for frame, clear glass 8mm, unhardened

501697	L60	D30
501698	L60	D40
501634	L90	D30
501635	L90	D40
501651	L120	D30
501652	L120	D40

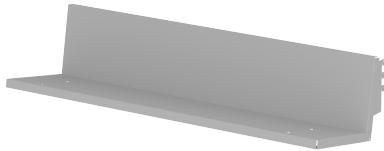
Other shelves

L=Length/cm

D=Depth/cm

H=Height/cm

Ø mm



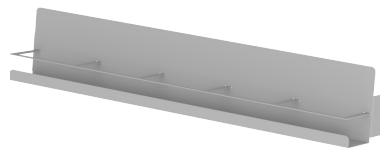
Book shelf

520116	L60	D16	H18
520117	L90	D16	H18
520118	L120	D16	H18
1005561	L60	D23	H18
1005564	L90	D23	H18
1005611	L120	D23	H18
1005613	L60	D30	H18
1005614	L90	D30	H18
1005615	L120	D30	H18



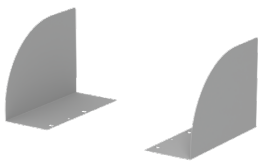
Magazine/book stand

1010843	L60	D8	H30
1010832	L90	D8	H30
1010429	L120	D8	H30



CD/DVD shelf

521214	L90
--------	-----



Support pair for books

521019	L9	D16	H17
1005616	L9	D23	H17
1005617	L9	D30	H17

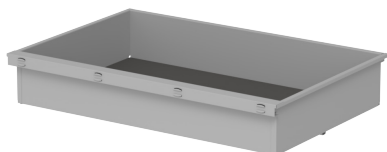
Other shelves

L=Length/cm

D=Depth/cm

H=Height/cm

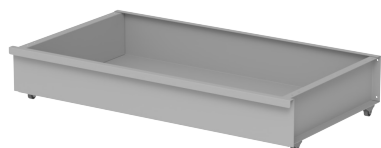
Ø mm



Bottom trough with rubber mat

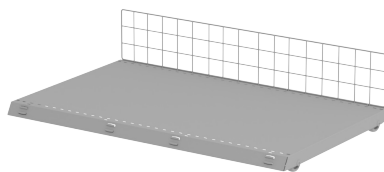
1018024	L90	D50	H15
501330	L90	D60	H15
501340	L120	D60	H15

+ muut mitat



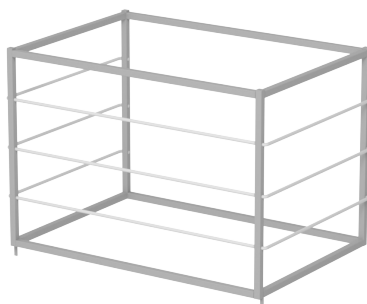
Bottom trough with wheels

1003694	L90	D40	H16
1005877	L90	D50	H16
2008833	L90	D60	H16



Bottom shelf with wheels

2024195	L60	D40	H15
2024196	L60	D50	H15
2024197	L60	D60	H15
2024198	L90	D40	H15
2024199	L90	D50	H15
2024200	L90	D60	H15



Ball basket for steel shelf

1003748	L90	D50	H60
---------	-----	-----	-----

Wire basket

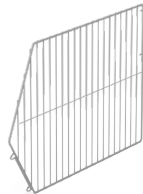
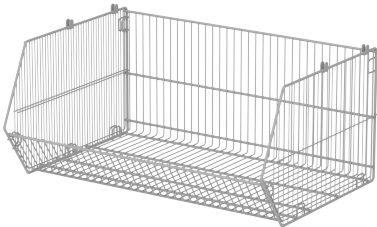


L=Length/cm

D=Depth/cm

H=Height/cm

Ø mm



Wire basket, zinc

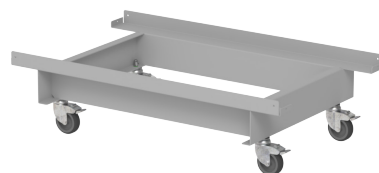
520036	L90	D40	H40
501889	L90	D50	H40
501890	L90	D60	H40
520040	L120	D40	H40
501812	L120	D50	H40
501813	L120	D60	H40

Basket divider, zinc

520042	D40	H40
501861	D50	H40
501862	D60	H40

Basket clip for a steel shelf, 2pcs per basket

581122	H6
--------	----



Trolley with lockable castors, zinc

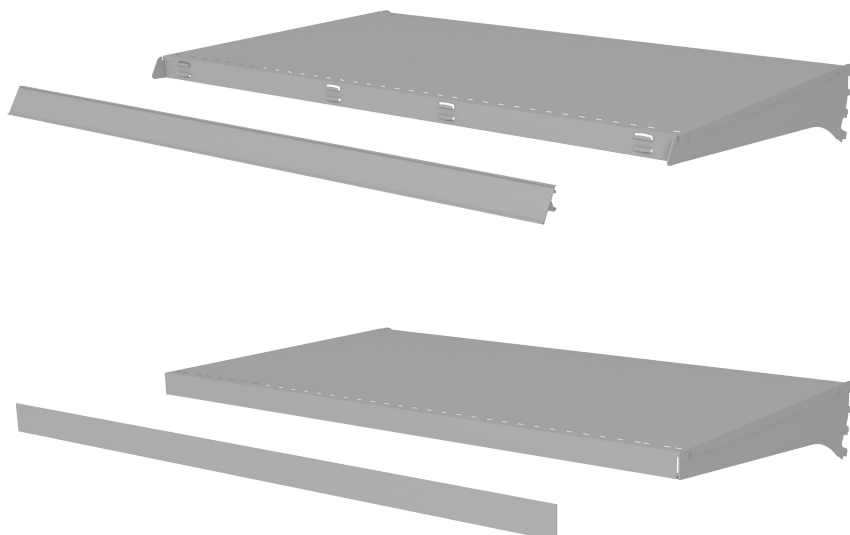
501865	L90	D60
501830	L120	D60



Data strip holder for basket

520240-51

Data strips



L=Length/cm

D=Depth/cm

H=Height/cm

Ø mm

Data strip 39, plastic

Clear

1103066	L60	H4	39
1018896	L90	H4	39
1104557	L120	H4	39

White

501195	L60	H4	39
501196	L90	H4	39
501197	L120	H4	39

Grey RAL 7045

1107192	L60	H4	39
520206	L90	H4	39
1109095	L120	H4	39

Data strip 52, plastic

Clear

1004600	L60	H5	52
520215	L90	H5	52
520216	L120	H5	52

White

1017043	L60	H5	52
1017042	L90	H5	52
1020200	L120	H5	52

Grey RAL 7045

520209	L90	H5	52
520210	L120	H5	52

Black

1107637	L60	H5	52
1105323	L90	H5	52
1105912	L120	H5	52

Data strip with adhesive tape, plastic

Clear

1013015	L60	H3	26
501985	L90	H3	26
520137	L120	H3	26

Clear

1019765	L60	H4	39
501986	L90	H4	39
520138	L120	H4	39

Clear

584042	L90	H5	52
584043	L120	H5	52

Black

1108166	L90	H5	52
---------	-----	----	----

Data strip bracket



For use 2 pcs per data strip with modules.
Bend to the right length when pininstalling.

L=Length/cm

D=Depth/cm

H=Height/cm

Ø mm



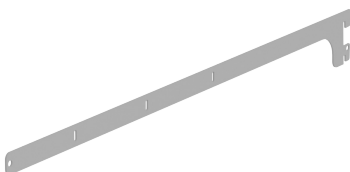
Data strip bracket

1101295 10 / 15 / 20 cm



Data strip profile

587000	L60	H2
587001	L90	H2
587002	L120	H2



Data strip bracket

1101296 20 / 30 / 40 cm

Data strips

L=Length/cm

D=Depth/cm

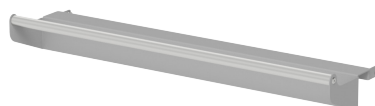
H=Height/cm

Ø mm



Data strip for a T-hook, clear plastic

520220	L5.5	H3	26
550087	L5.5	H4	39
1010769	L6	H4	39
1103479	L7.5	H4	39
550088	L10.5	H4	39
550184	L5.2	H5.2	52
1023916	L9.5	H5.2	52
550185	L10.5	H5.2	52
550180	L10.5	H6	60

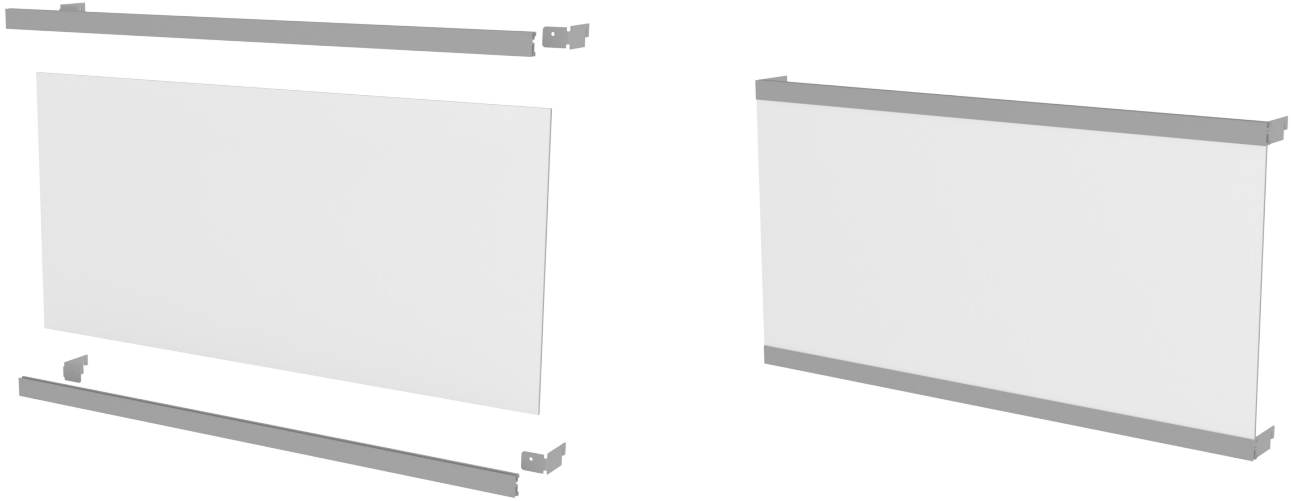


Data strip collision cover with RST-tube

1102535	L60
1102321	L90
1102536	L120

For low and high feet

Info profile



Info profile height 32 mm.
 Info sign max. thickness 6 mm.
 Height of the sign when brackets are installed to the uprights: (X*32)-20 mm.

L=Length/cm D=Depth/cm H=Height/cm Ø mm



Brackets for info profile

550325 D5



Info profile

801829 L60
 801830 L90
 801831 L12

Product info frames

L=Length/cm

D=Depth/cm

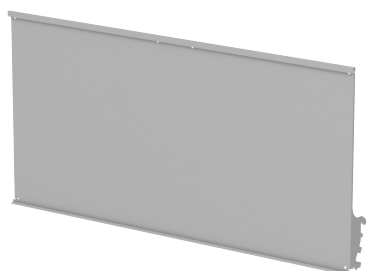
H=Height/cm

Ø mm



Info holder

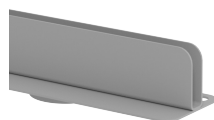
1016513	L60	H9
521216	L90	H9
1012976	L120	H9



Adjustable info frame

2008430	L60	H45
2006147	L90	H45
2009547	L120	H45

Asennot suora, sekä 13 ja 30 astetta kallistettu



Product information holder top, with magnet

1005411	L60	D3	H2
1005415	L90	D3	H2

For 5 mm product sign



Product info frame A4 with magnet

521303	H8
--------	----



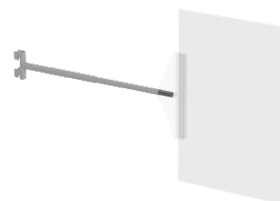
Product info A4 with magnet

1005426	H8
---------	----



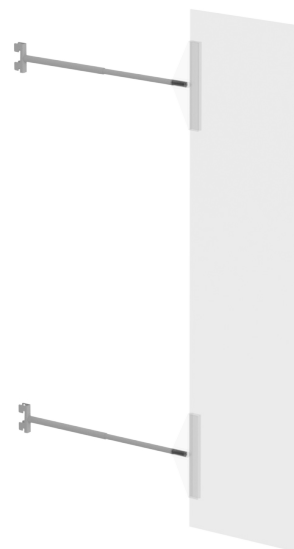
Product info frame A4, with foot

521304	H25
--------	-----



Product info frame A4, with upright

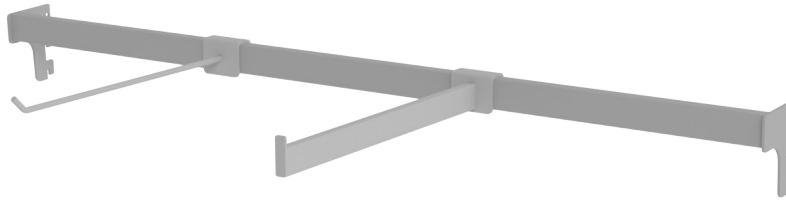
621305	D35-65
--------	--------



Product info frame 3xA4 with upright

1005544	D35-65
---------	--------

Cross bar



L=Length/cm

D=Depth/cm

H=Height/cm

Ø mm



Cross bar with lugs, chrome-plated

501170	L60	D5
501171	L90	D5
501172	L120	D5



Cross bar with brackets

1017726	L60	D25
1017725	L90	D25
1017724	L120	D25
1012363	L60	D30
1012362	L90	D30
1012361	L120	D30
1017723	L60	D35
1017722	L90	D35
1017721	L120	D35



Hook for cross-bar, chrome-plated

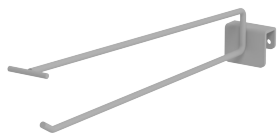
500274	D10	Ø4
500283	D15	Ø4
500282	D20	Ø6
500284	D25	Ø6
520077	D30	Ø6
583021	D30	Ø8
520397	D40	Ø8

L=Length/cm

D=Depth/cm

H=Height/cm

Ø mm



Wire hook with sign holder for cross bar, chrome-plated

550108	D15	Ø5
550109	D25	Ø5
550110	D30	Ø6
550111	D40	Ø8



Double wire hook, chrome-plated

500294	D10	Ø4
500295	D15	Ø4
500289	D20	Ø5
500296	D25	Ø5



Double wire hook with sign holder for cross bar, chrome-plated

550112	D15	Ø5
550113	D25	Ø5
550114	D30	Ø6



Holder for cross bar, chrome-plated

520363	D30
520029	D40



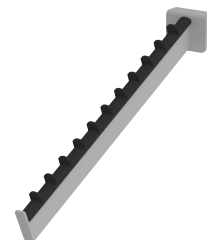
Holder for cross bar, chrome-plated

500290	D30x8
500291	D40x8



Straight presentation hanger, chrome-plated

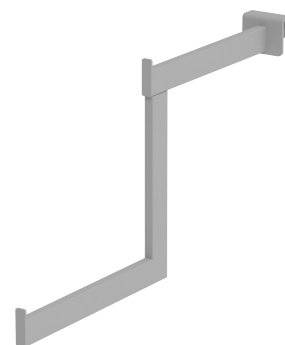
520366	D30
520367	D40
520368	D50



Down slant presentation hanger, chrome-plated

520369	D30
520370	D40

Plastic covering strip, black



Stepped presentation hanger, chrome-plated

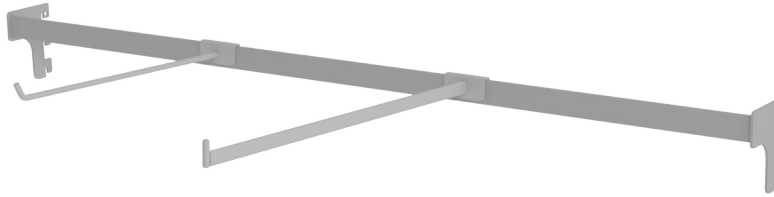
520371	D40
--------	-----



Cross bar, chrome-plated

520080	L60	D30
--------	-----	-----

Flat cross bar



L=Length/cm

D=Depth/cm

H=Height/cm

Ø mm



Flat cross bar, chrome-plated

501338	L60	D5
501322	L90	D5
501336	L120	D5



Flat cross bar, chrome-plated

501339	L60	D12
501335	L90	D12
501337	L120	D12



Hook for flat cross bar, chrome-plated

502071	D5	Ø4
502072	D10	Ø4
502073	D15	Ø4
520027	D30	Ø6
520028	D35	Ø8



Hook with sign holder for flat cross bar, chrome-plated

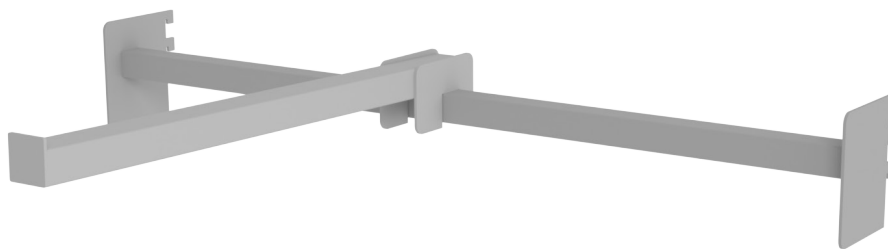
1005149	D15	Ø6
1009963	D20	Ø6
1005148	D25	Ø5
1004597	D30	Ø6



Hanger for flat cross bar, chrome-plated

502074	D40
--------	-----

Cross bar for heavy loads



L=Length/cm

D=Depth/cm

H=Height/cm

Ø mm



Cross bar for heavy loaded hangers, painted

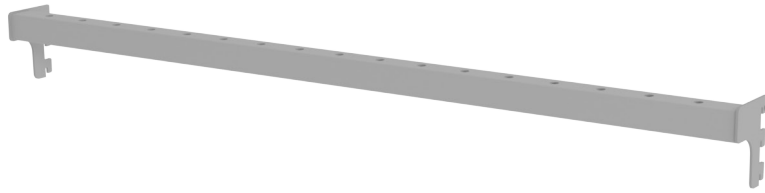
- 520012 L60
- 520010 L90
- 520011 L120



Holder for heavy loads, painted

- 520013 D60

Adjustable rack



L=Length/cm

D=Depth/cm

H=Height/cm

Ø mm



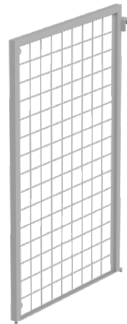
Adjustable rack, chrome-plated

521014	L60	D5
521015	L90	D5
521016	L120	D5



Divider arch for perforated cross bar, chrome-plated

520136	D38	H70	Ø8
--------	-----	-----	----



Mass divider for perforated cross bar

520170	D60	H84
520171	D80	H84



Frontal tube for mass divider

501905	D7	H76
--------	----	-----



Ready-made curtain bracket

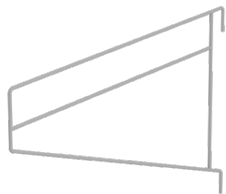
1003460	D55
---------	-----

L=Length/cm

D=Depth/cm

H=Height/cm

Ø mm



Bed cloth hanger for perforated cross bar, chrome-plated

521011 D80



Rack for fishing rods

2008828 D60 H100

Panel accessories

L=Length/cm

D=Depth/cm

H=Height/cm

Ø mm



Hook for panel, for small items, chrome-plated

500302	D10	Ø4
500303	D15	Ø4
500308	D20	Ø6
500304	D25	Ø6
520081	D30	Ø6



Double wire sign holder hook for panel, chrome-plated

550104	D15	Ø5
1010437	D20	Ø5
550106	D30	Ø6
550107	D40	Ø8



Holder for panel, chrome-plated

520076	D30	Ø8
500319	D40	Ø8



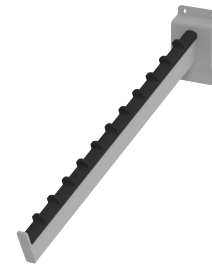
Sign holder hook for panel, chrome-plated

550100	D15	Ø5
550102	D30	Ø6
550103	D40	Ø8



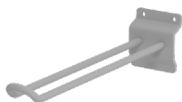
Straight presentation hanger for panel, chrome-plated

520372	D10
521052	D20
520373	D30
520374	D40



Slanted presentation hanger for panel, chrome-plated

521053	D30
520375	D40



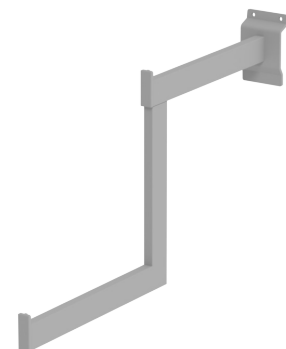
Double wire hook for panel, chrome-plated

500320	D10	Ø4
500321	D15	Ø4
500356	D20	Ø6
500322	D25	Ø6



Straight presentation hanger for panel, painted

521001	D10
521002	D30



Stepped hanger for panel, chrome-plated

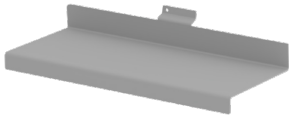
521054	D40
--------	-----

L=Length/cm

D=Depth/cm

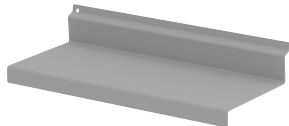
H=Height/cm

Ø mm



Straight display shelf

521024 L30 D13



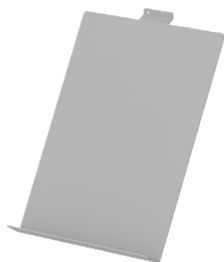
Straight display shelf

521022 L30 D13



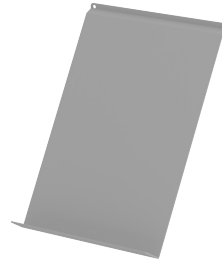
Presentation shelf

1016448 L60 D20



Display shelf, slanted

521021 L22 D31



Display shelf, slanted

500275 L15 H21
521020 L22 H31



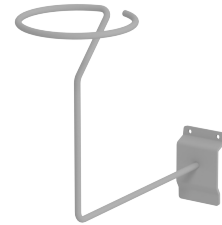
Bracket for a wood/glass shelf

521044 D20
521046 D30
521048 D40



Ball holder

521017 D30



Hat holder, chrome-plated

500340 D20 H19

Perforated backpanel accessories

L=Length/cm

D=Depth/cm

H=Height/cm

Ø mm



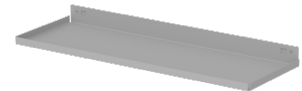
Hook, zinc

501867	D5	Ø4
501869	D10	Ø4
501870	D15	Ø4
501871	D20	Ø4
501872	D15	Ø6
501873	D20	Ø6



Double wire hook, zinc

501879	D10	Ø4
501880	D20	Ø4
501881	D30	Ø4



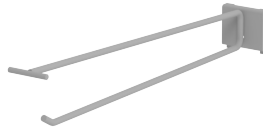
Shelf for perforated panel

1005453	L35	D12	H1
---------	-----	-----	----



Hook, zinc

501874	D30	Ø6
501875	D30	Ø8
520078	D40	Ø8
520079	D50	Ø8



Hook with a sign holder, zinc

520200	D20	Ø5
520201	D30	Ø6
520202	D30	Ø8
1008436	D40	Ø8



Shelf for perforated panel

2005517	L37	D14	H3
2005216	L47	D14	H3



Double wire hook, zinc

520066	D20	Ø5
520067	D30	Ø5



Hook, zinc

501886	D8
--------	----



Shelf edge

2006240	L47	D14	H3
---------	-----	-----	----

L=Length/cm

D=Depth/cm

H=Height/cm

Ø mm



Card case for perforated panel

2002845 L12 D3 H11



Fixing screw for a hook

906670 M5x10(100 kpl)

Order separately

Accessories for uprights holes

L=Length/cm

D=Depth/cm

H=Height/cm

Ø mm



Holder for upright holes, chrome

1004878	D25	Ø8
520392	D30	Ø8



Presentation hanger for the holes in uprights

1004883	D25
520393	D30
520394	D40



Clipstrip

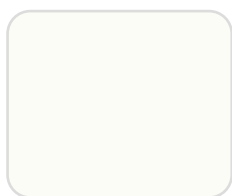
550352	H90
--------	-----

Colours and materials

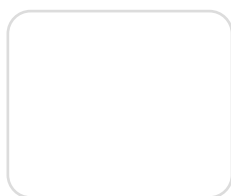
From our color and material selection, you can choose the options that best suit the look of the store.

On the following pages you will find examples of our stocked colours, melamine and laminate materials. Other colours are also available.

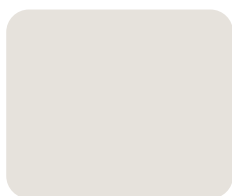
Standard colours



RAL 9010



RAL 9016



RAL 7047



RAL 7040



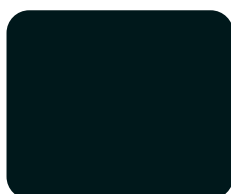
RAL 7045



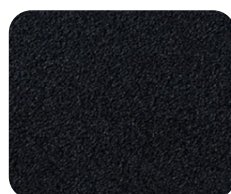
RAL 7015



DA 4153



RAL 9005



RAL 9005
Structure

Please note that the colours on the screen may differ from the actual colours. If necessary, please check the colour on the sample.

Melamine and laminates



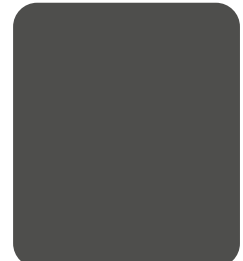
White



Black



Mel 5762



Mel 508



Saarni



Vicenza Oak



Madura Oak



Elegant Oak
F5374 NAT

Please note that the colours on the screen may differ from the actual colours.
If necessary, please check the colour on the sample.

ITAB

RETHINK RETAIL. TOGETHER.

ITAB Finland Oy
Robert Huberin tie 3B
01510 Vantaa
Finland

Haapaniementie 3
40800 Vaajakoski
Finland

Puh: 0207 121 611
asiakaspalvelu@itab.com
www.itab.fi

